

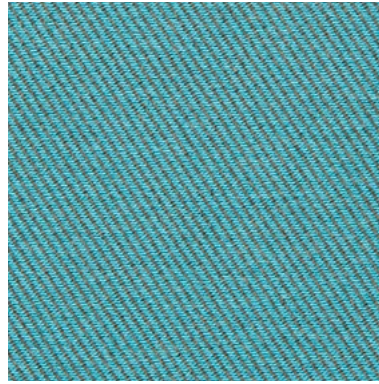


(agora)[®]

EXPERIENCE FABRICS



CLOUD



Twitell Toe
3973



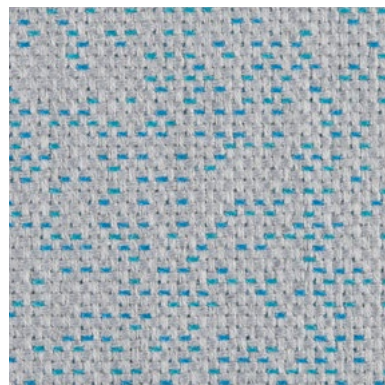
Bruma Nieve
1021



Thunder Cloud
8019



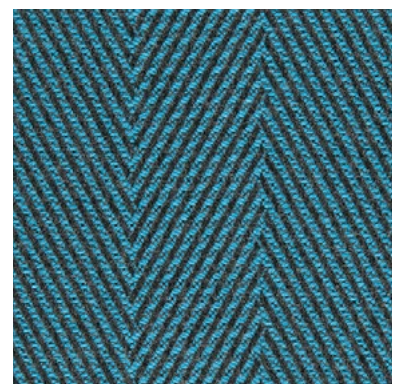
Panama Acqua
8006



Cheviot Sea
1703



Senda Nieve
1046

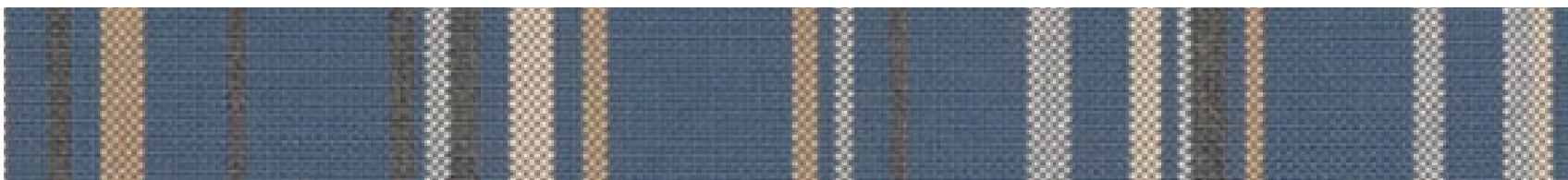


Esquire Bombay
1325

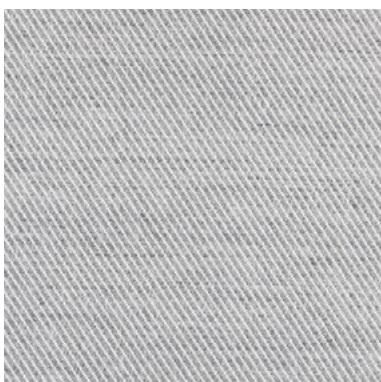
(agora)[®]



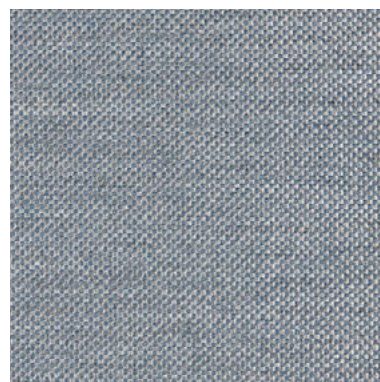
Cheviot Brisa
1706



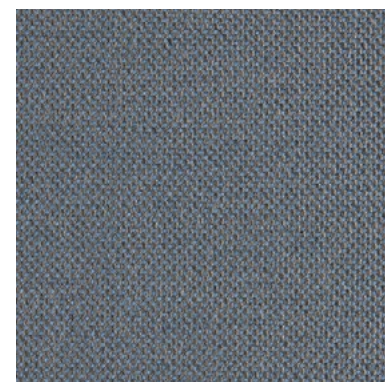
Thunder Slate
8020



Twitell Sacha
3961



Panama Artic
8007



Panama Slate
3664

LIMESTONE



Panama Fossil
3659



Panama Blanco
3739

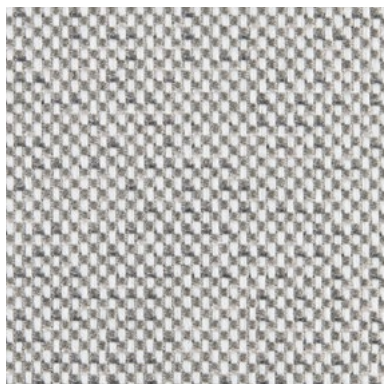


Thunder Limestone
8018



Artisan Mineral
1402

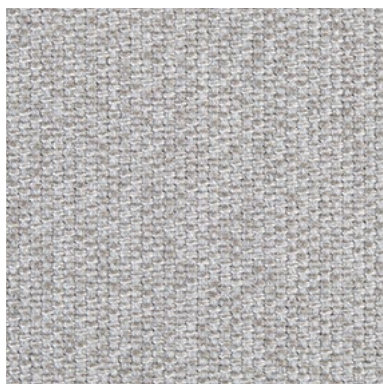




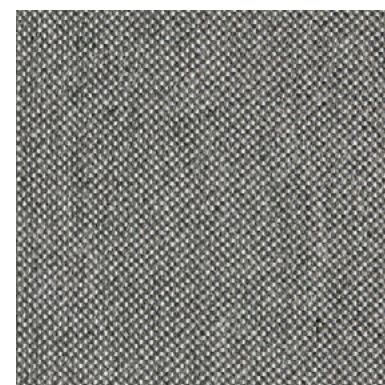
Cheviot Sand
1711



Esquire Grey
1332



Bruma Niebla
1007

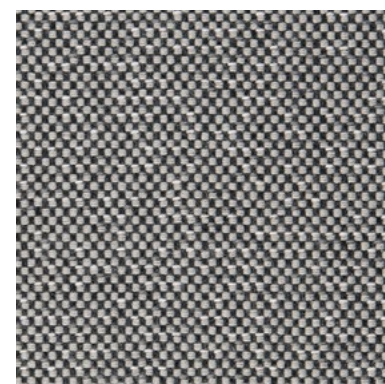


Panama Stone Grey
3669



Senda Niebla
1032

(agora)[®]



Cheviot Stone
1709



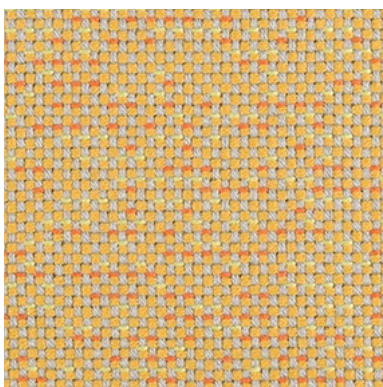
Twitell Curcuma
3965



Panama Grass
3665



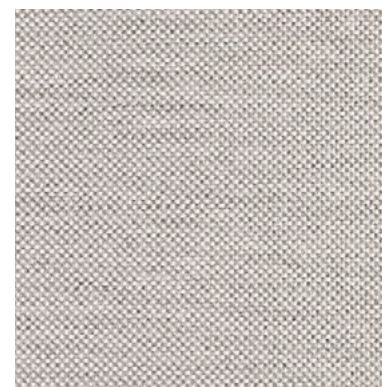
Thunder Mustard
8024



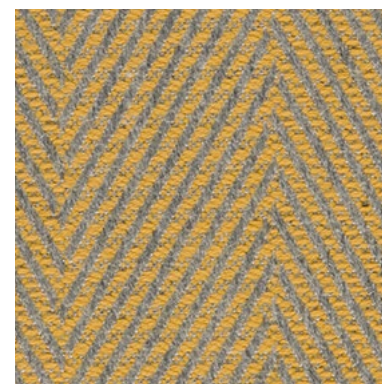
Cheviot Mostaza
1713



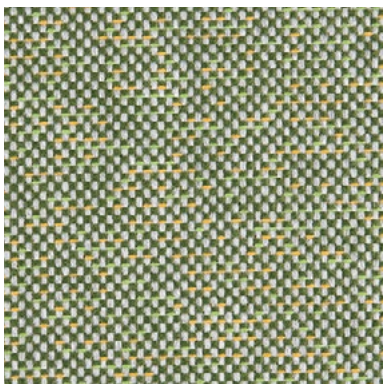
Panama Citron
8003



Panama Cloud
3658

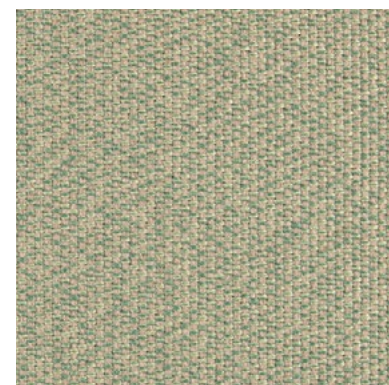


Esquire Mustard
1336



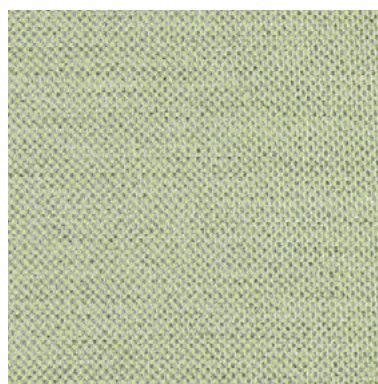
Cheviot Musgo
1701

MUSTARD



Bruma Oliva
1016

(agora)



Panama Menta
8004



Senda Oliva
1041

INTEGRAL



Esquire Fossil
1331



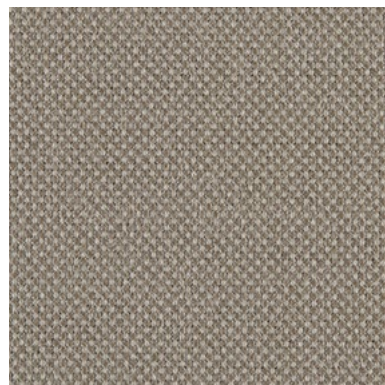
Panama Lino
8008



Thunder Integral
8017



Panama Marble
1322



Panama Mineral
3742



Artisan Hueso
1410



Esquire Marble
1333

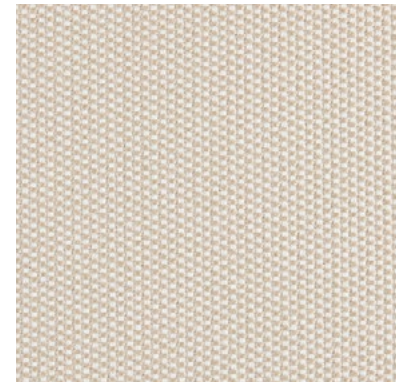
(agora)[®]



Artisan Arena
1409



Twitell Ery
3964



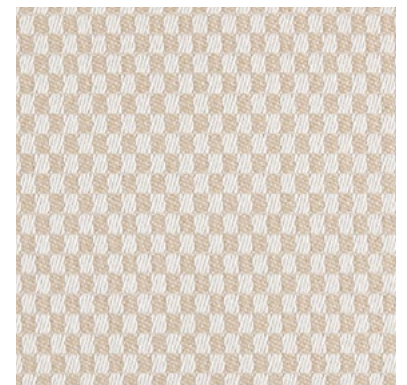
Bruma Avena
1022



Panama Marfil
3741



Cheviot Avena
1712



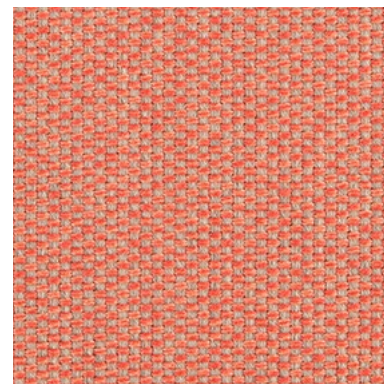
Senda Avena
1047



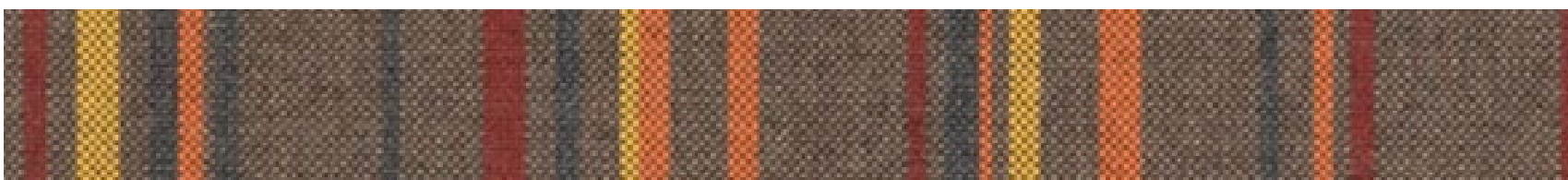
Thunder Bone
8016



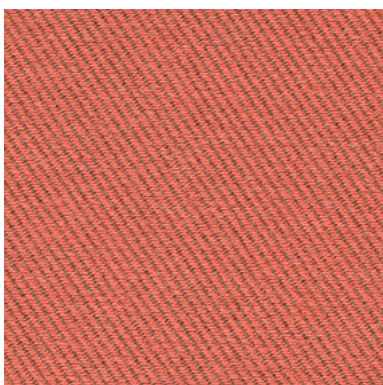
Panama Grafito
8013



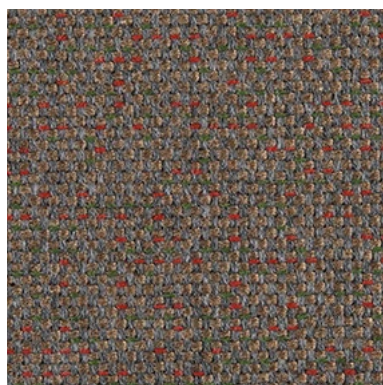
Bruma Coral
1013



Thunder Moka
8022



Twitell Hibiscus
3967

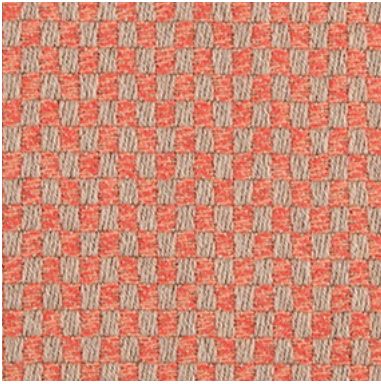


Cheviot Dandy
1710

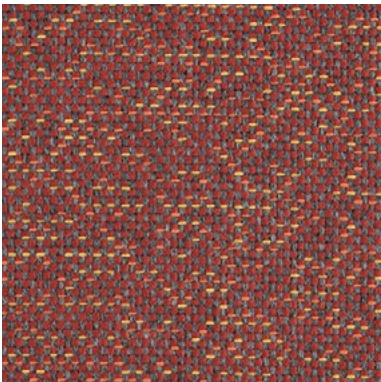


(agora)[®]

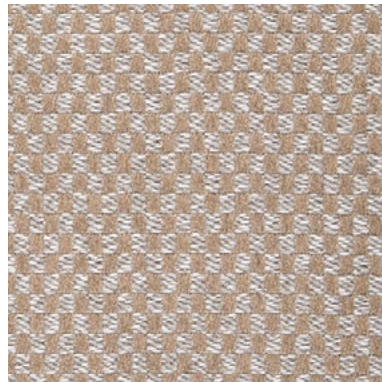
MOKA



Senda Coral
1038



Cheviot Terra
1707



Senda Nuez
1034



Thunder Tierra
8023



Artisan Yute
1408

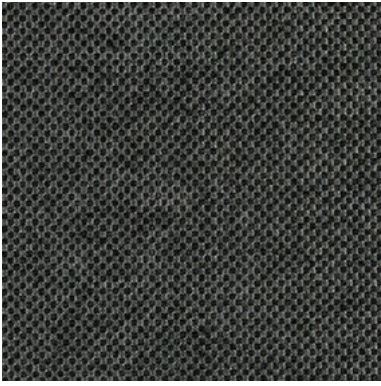


Panama Integral
3740



Bruma Nuez
1009

ASH



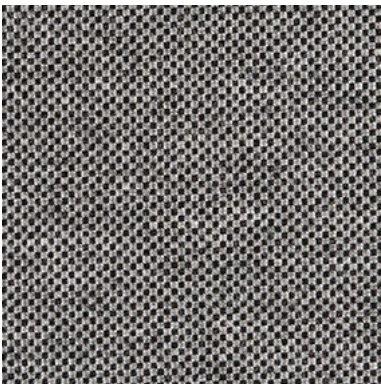
Panama Onyx
3657



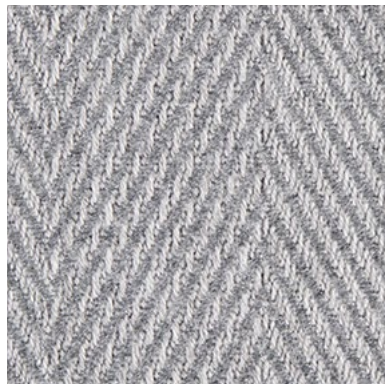
Esquire Cream
1329



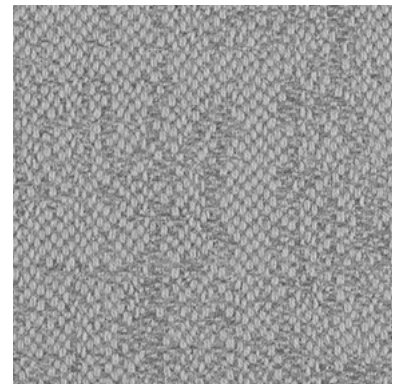
Thunder Ash
8021



Panama Ash
3743



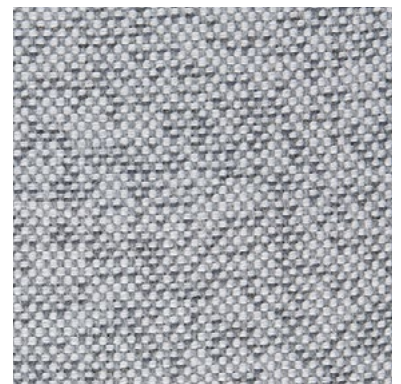
Esquire Pearl
1339



Artisan Acero
1413



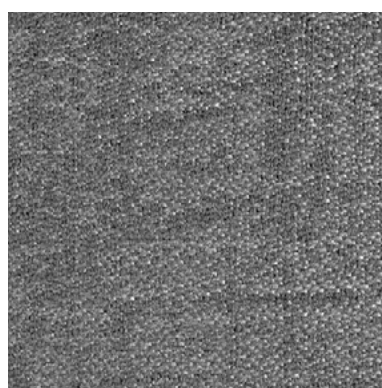
Artisan Niebla
1411



Cheviot Piedra
1702



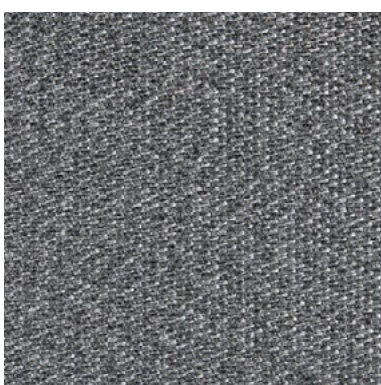
Artisan Marengo
1415



Artisan Humo
1414



Twitell Io
3978

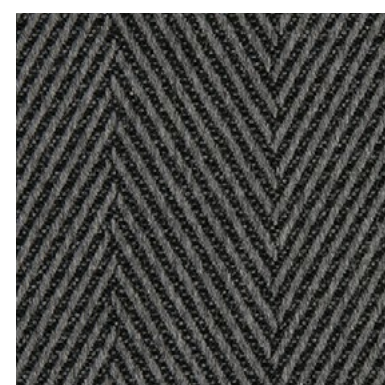


Bruma Grafito
1004

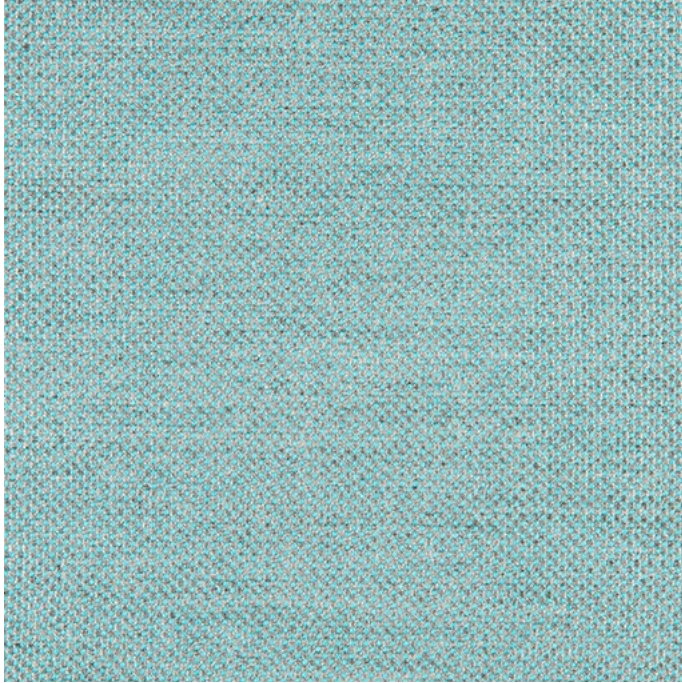
(agora)



Senda Grafito
1029



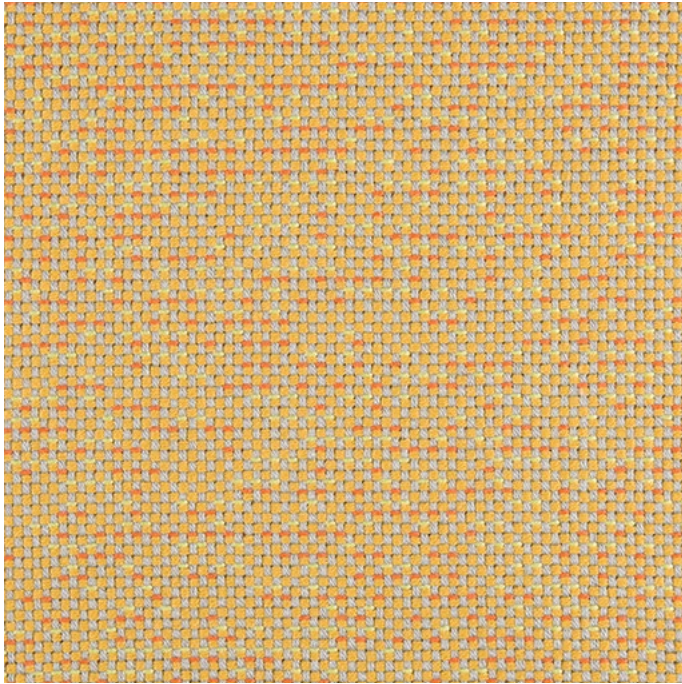
Esquire Onyx
1338



Panama Acqua
8006



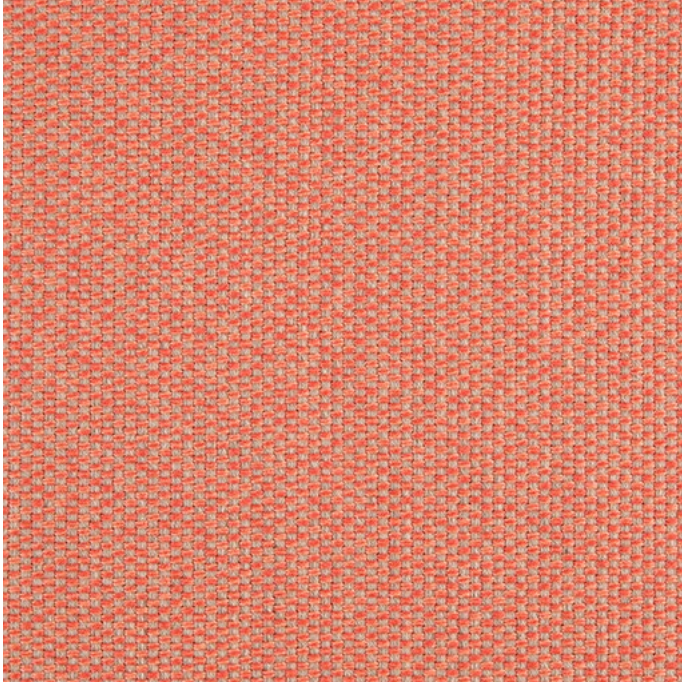
Thunder Cloud
8019



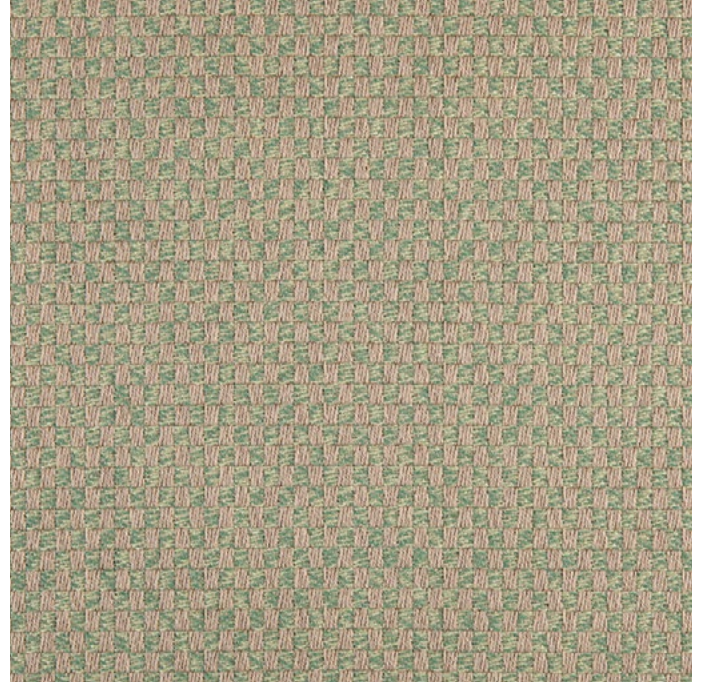
Cheviot Mostaza
1713



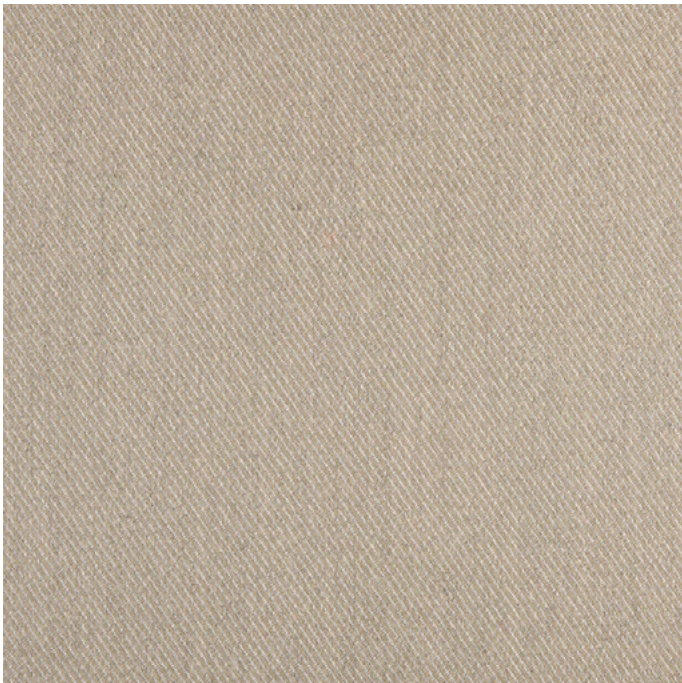
Esquire Marble
1333



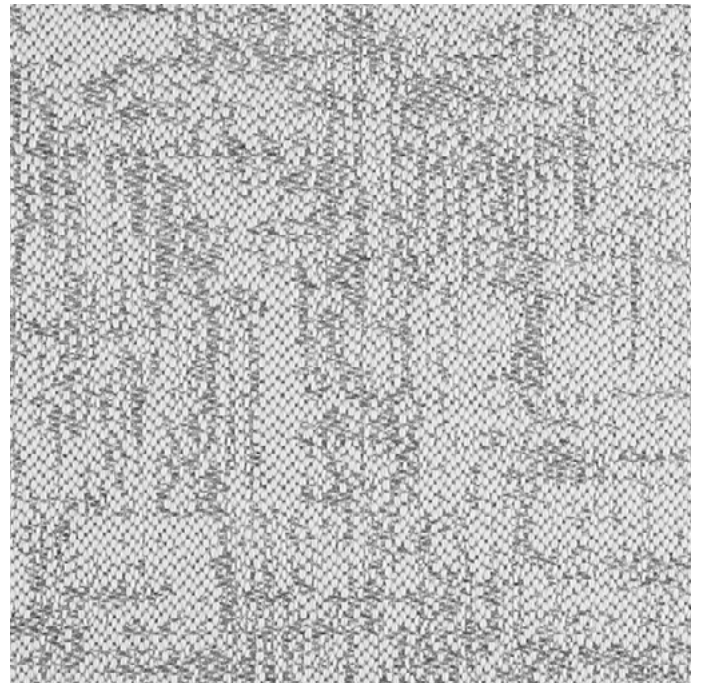
Bruma Coral
1013



Senda Oliva
1041



Twitell Ery
3964



Artisan Niebla
1411

100% Solution Dyed Acrylic

In Agora[®] fabrics, colour pigments impregnate the polymer dissolution before the fibre is formed. That way, the yarn is dyed to the core, conferring an excellent colour fastness and exceptional behaviour in outdoor conditions and in the presence of micro-organisms. The strong link between the carbon is not destroyed, so the colour does not change with the passage of time.

	ESQUIRE	CHEVIOT	SENDA	ARTISAN	BRUMA	THUNDER	PANAMA	TWITELL
Width	160 cm							
Weight	420 g/m ²	435 g/m ²	440 g/m ²	450 g/m ²	400 g/m ²	280 g/m ²		300 g/m ²
Length of roll	30 m					50 m		
Rapport	5,5 cm	/	/	80x117 cm	/	28,5 cm	/	/
Finish	Water repellent, Anti-stain							
Colour fastness to light	7/8 UNE EN ISO 105-B02:2014							
Uses								
Cleaning instructions								

Sensitive values of tolerance +/- 5%.



Optional fabric finishes



WATERPROOF



FLAME RETARDANT*

UNE 1021 PARTS 1-2
IMO PEF 2010 Anex
1. Part 8
BS 5852 Cigarette &
Match



safe home SAFE HOME

Extra softness

The Agora warranty covers the fabric becoming unserviceable as a result of loss of colour or strength from normal exposure conditions, including sunlight, mildew, rot and atmospheric chemicals, when properly installed, used and maintained. The warranty does not cover labour and installation costs supplied by the dealer. The warranty neither applies against deterioration of any kind due to abusive use, accidental burns, negligence or perforations.

Waterproof and flame retardant finishes: Recommended for cushions and upholstery only. Always use the lamination face inside. Do not expose the coated side to sun or light.

*Only for Thunder / Panama / Twitell.

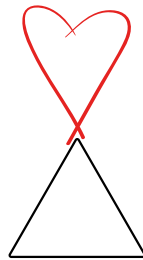


DURABLE
is green

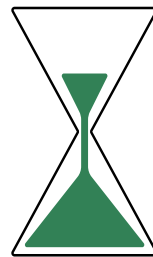


(agora)[®]

EXPERIENCE FABRICS



BLEACH
friendly



DURABLE
is green